

# PRESBYTERIAN LINK

September-October 2022 No 143

The Monthly Newsletter of the  
Timaru Presbyterian Parish



## Mission Group Lunch a great hit



### What's coming up?

17 September—  
Plant Sale Pg 11  
15 October—Bible  
Society Safari Pg 13  
6 November—  
AGM Pg 11

Check out page 5 for info and 10 for more photos of the  
Mission Group event



For more information and photos of the Boys Brigade activities see pages 15 and 16



# Thank you

I would like to extend a sincere Thank You to the TPP Church Family for your love and kindness following the loss of my daughter Emma.



The many, many cards with your touching, heart felt messages, the gifts of flowers and food, your visits and phone calls are deeply appreciated and mean so much.

With my gratitude, love and blessings,  
Lyn Kirkland and Family.

# Editorial

*A letter from PCANZ Moderator Right Rev Hamish Galloway encouraging support for the Christian World Service Pakistan Flood Appeal. Also a message on the death of Queen Elizabeth II.*

Dear friends and colleagues

It has been very concerning to read of the devastating floods in Pakistan. Officials estimate 33 million people have been affected by severe flooding; one third of the country is under water.

I am writing to you from the World Council of Churches Assembly in Karlsruhe, Germany, where delegates have gathered from around the world in a display of unity and Christian solidarity. There are delegates here from Pakistan and we stand with them at this difficult time.

I am very encouraged by the quick action of Christian World Service in launching this emergency appeal for Pakistan. In the PCANZ we have a long and special relationship with CWS in these kinds of situations.

I commend the CWS Pakistan Flood Appeal to Presbyterians throughout New Zealand and encourage you to promote this appeal in your churches and to give generously. Find out more and donate to CWS <https://cws.org.nz/what-we-do/emergencies/pakistan-flood-appeal>.

The Presbyterian Church of Aotearoa New Zealand acknowledges the death of Queen Elizabeth II with deep sadness and with heartfelt thanksgiving for her life.

We are sad to lose someone who has had a special place in our lives for so many years.

**We are thankful for the Queen's long and full life of faithful, loving service** that has helped to navigate countries like ours through the good times, and the difficult times, for over seven decades.

As Christians, we also give thanks for the sincere Christian faith that guided her and sustained her throughout her life.

**We extend our condolences to the Queen's family and all those who are grieving** at this time.

We offer our prayerful support for the new King, Charles III.

Hamish Galloway  
Moderator PCANZ

[Moderator@presbyterian.org.nz](mailto:Moderator@presbyterian.org.nz)

# September Parish Council Report

Devotions were held by Hermann Frank. He read John 8, 12 where Jesus says: **“I am the light of the world. Whoever follows me will not walk in darkness, but will have the light of life.”** The light of Jesus shows us who we are, but also lights up the darkness of our world and gives hope, purpose and a destiny.

The trial with pre-sealed plastic cups for communion and the feed-back from the congregation was discussed. The overwhelming majority felt the cups were too fiddly, difficult to open and distracted from the spiritual experience of sharing communion. Also, concerns were voiced over the ever increasing amount of waste. We will go back to normal communion practise, but might offer the pre-sealed cups as an alternative and have them available on the plates for communion bread. Morning tea will continue and it is the individual choice to join.

There has been an approach by an African speaking group to use the facilities at St Stephens to gather and watch online services in Africaans. This needs further discussion with the group re expectations and details.

In previous Parish Council meetings there was broad agreement to have an intern. Now we have the confirmation that we have been accepted as a location to host an intern for 2023/24. The financial burden on the parish is virtually nil as the Knox Centre for Ministry and Leadership (KCML) will pick up most of the costs (including relocation). There will be some incidental costs e.g. setting up an office space, presbytery gatherings and retreats. Housing is the intern's responsibility, but if anyone knows of something suitable to rent please keep them in mind. This placement would also open the possibility for more local cover while Brent is away on study leave, probably not needing service from outside the parish.

The date for the AGM has been set on 6 November. Items for the agenda need to be in writing and received by 19 October, also nominations for Parish Council. Three councillors finish their term (Lois Shipley, Stephanie Holland, Judith Begg), but are eligible for re-election. Written apologies for not being able to attend the AGM have to be in by 2 November.

Our plant sale at St Stephens is on Saturday 17. Unfortunately this is the weekend for the Alpine Presbytery gathering (from 16–17 September at Hope Presbyterian, West Melton). Our ministers and two members of the Parish Council will attend, but other people are welcome as well. This applies to a Guided Retreat in Hanmer Springs, 25–27 September. Brent and Rory are planning to attend the One Conference, organised by the national church, in Wellington on 17 – 19 November. This is an opportunity to come together and

to re-connect, to be inspired by creative and innovative ideas and encounter the Spirit of the living God together.

Judith is prepared to do the Christmas shoebox again this year. This has been well supported in previous years. Boxes can be picked up in church and should be returned by 16 October (more in the Sunday bulletins).

We discussed the possibility of combined services at St Stephens over the winter months (July/August). Attendance has been noticeably lower during these months and it would save heating costs as well. No decision has been made yet.

Rhythm Kids and TP Kids have continued, but numbers have been affected by Covid and winter sickness. Helen would appreciate, if some more people would be able to help with this community outreach. Rory, with the support of others, is in the process of making raised beds for the Trinity community garden.

*Hermann Frank*

## **SNIPPETS from the Mission Group Meeting**

Just recently the Mission Group stepped out of their comfort zone and organised an after-church **pizza and coffee lunch raising funds for the Christian World Service's Sri Lankan Appeal**. This appeal highlighted the plight of exploited women in both the work and boarding house situations. Forty one people attended this very enjoyable function, and \$400 was raised for this worthy cause. Also thanks to Pizza Hut for their prompt delivery of 14 boxes of pizza as well as several donated garlic rolls !!

With spring just around the corner our attention starts to focus on our gardens, and what to grow - so this was our trigger to start Buy and Supply to start up again, raising funds for various charities. For our first Buy and Supply of the season on **2nd October, we will be raising funds for the Christian World Service's Pakistan Flood Relief Appeal**.

On our TV screens night after night we see horrifying scenes of the plight of people forced out of their homes by unimaginable flooding in Pakistan which has really **shocked us all**. **This season's monsoon rain has flooded over half the land area of Pakistan**, and that equates to roughly the total area of New Zealand. This fact is hard to comprehend!!

**NB. See the Moderator's recent letter about the situation in Pakistan.**

So when you are dividing up, sowing seeds, or taking cuttings, please keep Buy and Supply in mind. Every little donation helps this worthwhile appeal.

The next Bucket Project will be held later this month (date to be advised), and will also raise money for the Pakistan Flood Appeal. Our previous Mission Project raised \$235.70 for Eatwell. This money helps to cover the costs of the donated bag that is given to Family Works.

Elaine.



**Presbyterian Support**  
South Canterbury Incorporated



The 104<sup>th</sup> Annual General Meeting of  
**Presbyterian Support Services**  
**South Canterbury Inc.**

will be held on

**Wednesday 19th October 2022**

**at 7 pm**

In the lounge of

**The Park Centre**

20 Queen Street, Timaru.

Minutes of the 103<sup>rd</sup> AGM are available on our website  
(<http://pssc.org.nz/resources>).

Guest Speaker: Esraa Al-Hoot,

Refugee Settlement Services

**All members, supporters and friends**

**are welcome to attend.**

(Supper will be provided)

RSVP to [admin@pssc.co.nz](mailto:admin@pssc.co.nz) — or call 03 687 7945  
by Friday 14th October 2022

[www.pssc.org.nz](http://www.pssc.org.nz)

Carolyn Cooper  
Chief Executive Officer

## **Eat Well Fruit & Vege Co-op**

**22 College Rd & 349 Wai-iti Road**



**Family pack**

**\$15**

**Small pack**

**\$10**



**Orders 022-123-3663 or**  
**Email: [eatwell@timarupres.org.nz](mailto:eatwell@timarupres.org.nz)**

# SHARE THE GIFT OF GIVING THIS CHRISTMAS



## THE FAMILY WORKS CHRISTMAS

Angel project will enable your staff/group or school to buy gifts/gift vouchers, experiences etc for a local family in need this Christmas. Many local families are really struggling and providing **Christmas for their children seems so unattainable... just a dream**—you can help their dreams come true.

## HOW IT WORKS

Family Works will identify the families most in need in our community and will give you a profile of this family (e.g Mum & 3 kids, their ages and interests). You and your staff then shop for the family based on the profile (presents, Supermarket and petrol vouchers, warehouse vouchers, movie tickets, swim passes, edible treats, books, board games, puzzles). Family works will collect the gifts from you or you can drop off on designated delivery dates. These gifts will then be delivered to your family just before Christmas—**anonymity is the key to this project and everyone's privacy is protected.**

You can decide how this would work best for your business, group or school and how involved your staff/ group will become in the project. Support some of **South Canterbury's most vulnerable families** and become a Christmas Angel today.

## EXPERIENCE THE JOY OF GIVING

Christmas can be a joyous time, it can also be a time of extreme struggle and stress for some South Canterbury Families. With your help these families can have a magical Christmas.

## LET'S CHANGE LIVES TOGETHER

Family Works - Sponsor a family for Christmas project



Go on line to register at:  
[pssc.org.nz/the-christmas-angel-project](http://pssc.org.nz/the-christmas-angel-project)  
or email [ChristmasAngels@pssc.co.nz](mailto:ChristmasAngels@pssc.co.nz)

## Operation Christmas Child Boxes

Thank you once again to those who support this last year.



We will once again be supporting the project this year. Each box is to contain for boys and girls aged from 2-14 years old



- “wow” item or toy
- clothing item
- Personal care items
- School supplies
- Accessories ie hair accessories, jewellery, flashlights

The boxes from New Zealand generally go to Asia or Pacific Island country.

You are all invited to support this by providing items as above or make a contribution towards travel costs which is \$10.00 per box. If you wish to fill your own box please remember to include the transport cost of \$10.00. A box will be in each foyer for you to put in the items or leave the donation. Date for collection is 16 October 2022. I will have a supply of the OCC boxes available soon.

For further information contact Judith 03 688 6004.

## COLLEGE ROAD RE-ROOF

Trinity church and hall were right in the centre of the band of monster hail stones that swept through Timaru on 20/11/2019.

Initially, looking from ground level we thought our buildings had pulled through unscathed, but closer examination this proved not to be the case.

Over the last 12 months there have been more detailed inspections and discussions. The upshot of all this work is that the main pitched roofs of both the church and hall need replacing, together with the flat area on the east and west sides of the hall. Interestingly the steeple and the flat areas on the church do not need replacing. This is because the steeple area is copper and not subject to further deterioration and the flat area is older, heavier roofing and not affected.

While there are no known leaks at present, and damage is difficult to discern from ground level, the key element is that the surface of the iron is

compromised in all areas where there are dents, because over time this is likely to lead to corrosion and leaks. All contractors who have examined the roof confirm it is heavily peppered with indentations from the hail. All the more frustrating, is that the church roofing was renewed as recently as 2019 as part of our ongoing maintenance.

The successful contractor was Dan Cosgrove (2014) Ltd. Who have been very supportive to date with well detailed inspections (including closeups with drones) and excellent communication. The planned starting date for the work is Tuesday 25<sup>th</sup> October and the time span in the vicinity of five weeks (maybe less all going well).

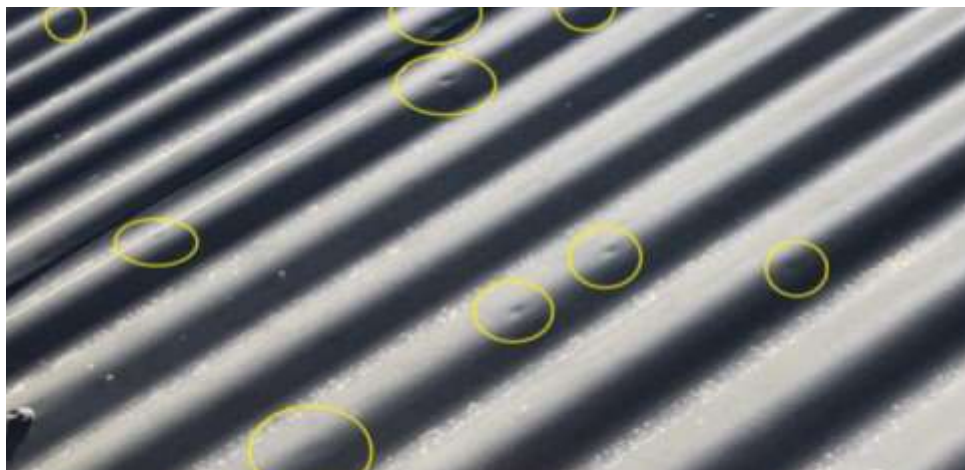
There will obviously be some juggling as to the level of usage we will be able to maintain, but Cosgroves are striving to work in with us to minimise the **disturbance. We envisage for example, the Rotary Clubs' Bookarama sale** will be slotted in between the finishing of the church and the erection of scaffolding on the hall.

It will be up to Parish Council to decide what level of usage will be available for tenants, but in most cases a swap between the church and hall should be possible for the relatively short time involved.

Sufficient to say all parties will be doing their best to cause as little disruption as possible, please bear with us.

We are indebted to Giles Rees of Godfrey & Co. Loss adjusters who has guided us through the procedure and liaised with the London Underwriters to arrange insurance cover.

Ken F



Mission Group photo from lunchtime fundraiser for World Service's Sri Lankan Appeal.





ST STEPHEN'S CHURCH, 349 WAI-ITI ROAD



# PLANT SALE



Flower plants, vegetable plants,  
All the usual stalls, and some surprises

9am Saturday, 17 September

**AGM**

**Sunday 6th November**

at St Stephens

following the 10.30am Combined Service

- Reports in by 12 October
- Any general business to the Parish Clerk by 19 October
- No motions from the Floor
- Written apologies to Parish Clerk by 2 November
- Verbal Apologies accepted from Floor

# WORSHIP @ TIMARU PRESBYTERIAN PARISH

Live streaming every Sunday

Type **Timaru Presbyterian Parish** in the Search bar.

<i>18 September</i>	9.00am Journey 21 C-Bay car park 9.30am Worship @ Trinity, 22 College Rd 10.30am Worship @ St Stephens, 349 Wai-iti Rd
<i>25 September</i>	9.30am Worship & Communion @ Trinity, 22 College Rd 10.30am Worship @ St Stephens, 349 Wai-iti Rd
<i>2 October</i>	9.30am Worship @ Trinity, 22 College Rd 10.30am Worship @ St Stephens, 349 Wai-iti Rd
<i>9 October</i>	9.30am Combined Worship @ Trinity, 22 College Rd Girls & Boys Brigade Parade

## TIMARU PARISH EVENTS

### Youth & Children's Events:

**Boys' Brigade** 3.15pm - 4.30pm Mondays at 22 College Rd  
Contact : Fiona 688-0375 or 021-1702930

**Rhythm Kids:** Tuesdays, 10-11am, Trinity Hall, College Rd.  
Contact: Helen 684 6403 or 021768 973

**Girls' Brigade Juniors** 3.15pm Tuesdays at 22 College Rd

**Girls' Brigade Seniors** 6.00pm Tuesdays at 22 College Rd  
Contact : Fiona 688 0375 or 021 170 2930

### Regular Events:

**Prayer Group:** Tuesday 9.00am, Wai-iti Rd, Brent 686 1382

**Community Club:** Tuesdays, 1.30-3.30pm at Wai-iti Rd

**Eat Well Co-op Packing:** Tuesdays, 11.30am, Wai-iti Rd.

**Eat Well Co-op Pickups:** Tuesdays, 3-4 pm at College Rd & Wai-iti Rd

**Yoga for Seniors:** 2pm on Thurs in the hall at Trinity. Leigh Marsden takes this 'not on the floor' exercise programme. This is for men and women. \$3 donation to assist with expenses is appreciated. Would you like to attend these classes? Or for more information, please contact Helen ph 684 6403 or 021 768 973.

# TIMARU PARISH EVENTS

## Coming Up

**Eatwell** - Bags \$15 large and \$10 small. Place your order Thursdays by 8pm, pick up Tuesdays 3-4pm from Trinity Community Centre, 22 College Road or St Stephens Church, 349 Wai-iti Road.

Ph 022 123 3663 .

**The Community Club:** Tuesdays, 1.30-3.30pm at St Stephens for Cards 500. New members welcome. Contact: Sid & Hazel 684 3478.

**Journey 21:** Meets at C-Bay carpark. 9am, Sunday 18 September. All welcome. Contact: Ellen ph 027 7723 146

**Jam Session** is on Wednesday 21 September at St Stephens, 7.00 to 8.30pm. Contact: Brent

**Community Lunch** will take a break for September. Will return on the **25th October** and final one for the year **22nd November**

Contact Bev PH 686 0858 Sid 684 3478 Office 686 0981

**Bible Society Safari:** The date will be Saturday 15 October: If the weather is fine, we will meet at Life Church at 11.30am for car sharing to Geraldine. 12pm -12.45 pm meet at Todd Park at the picnic area for lunch ( bring your own). We then will go to Peel St Chapel, St Andrews, St Mary's and back to ST Andrews for afternoon tea. Wet weather option: Meet 12.30pm at Life Church with your lunch in your tummy. We will then start at Talbot St Chapel, St Mary's, Peel St Chapel, Catholic Church and St Andrews, where we will have afternoon tea.

For further information ask Evi at [mama@newfrankland.org](mailto:mama@newfrankland.org) (phone: 684 5399) or Alistair [snoek@xtra.co.nz](mailto:snoek@xtra.co.nz)> (688 3817)

***Good things take time...***An automatic pump has finally been install in the flood prone basement at St Stephens. The pump switches itself on when water builds up and begins pumping it out to the storm water system. **If you've ever had the 'pleasure' (as I have) of bucketing out the flooded basement you will know what a great leap forward this is. Many thanks to Estelle Cormack's** sister Doris who provided the funds for this project out of her estate and for Jim Garden who arranged to have it installed. And given the amount of rain we seem to be getting its come just in time!

Brent.



# TIMARU PRESBYTERIAN PARISH

## Worship Centres

349 Wai-iti Rd, Glenwood, Timaru

22 College Rd, Timaru South

[www.timarupres.org.nz](http://www.timarupres.org.nz)

### Parish Office

349 Wai-iti Rd Phone: 686-0981

email: [oneoffice@timarupres.org.nz](mailto:oneoffice@timarupres.org.nz)

Financial matters: [finance@timarupres.org.nz](mailto:finance@timarupres.org.nz)

Office hours: Tuesday to Friday 9am - 3pm

Closed 12-1pm Tuesday & Wednesday

## PARISH CONTACTS

### ***Ministry Team Leader***

Brent Richardson 686-1382, 0274221892 [brent@timarupres.org.nz](mailto:brent@timarupres.org.nz)

*Not available Fridays*

### ***Minister***

Rory Grant 686-1575, 0275705156 [rory@timarupres.org.nz](mailto:rory@timarupres.org.nz)

*Not available Fridays*

### ***Parish Clerk***

Judith Begg 688-6004, [parishclerk@timarupres.org.nz](mailto:parishclerk@timarupres.org.nz)

## LINK DEADLINE

Copy for the October-November LINK should be emailed to [link@timarupres.org.nz](mailto:link@timarupres.org.nz) or sent to the Church Office by Friday 7 October.

# Boys Brigade

Recently company section Boys went small-bore rifle shooting as part of their badge. Leaders and a couple of parents also had some fun shooting. Fun was had by all.

Fiona



10-11am Thursday

See you there



Trinity Community Centre  
22 College Road

Bring a healthy snack for your child  
Morning tea for carers supplied  
Contact Helen 021768973 for more info  
[www.limarupres.org.nz](http://www.limarupres.org.nz)

Gold Coin Donation

# PLAYGROUP

play & learn for preschoolers



music and movement  
for 0-5 year olds

Every Tuesday morning  
during school term  
10-11am Trinity Hall College Rd  
Gold Coin Donation  
Morning Tea Supplied  
Helen 021 768 973

# Boys Brigade

Boys brigade boys practicing their tent pitching skills at the hall. Everyone enjoyed the practice. Some boys/young men were better than others. Well done boys.

Fiona



This issue of "PRESBYTERIAN LINK" is delivered to you  
by..... Phone.....